

**First Reading: November 30, 2021**  
**Second Reading: December 7, 2021**

MR-2021-0188  
Ethan Collier Construction  
c/o WS Renew, LLC  
District 9

ORDINANCE NO. 13745

AN ORDINANCE CLOSING AND ABANDONING AN EXISTING SEWER EASEMENT LOCATED IN THE 1600 BLOCK OF SOUTH WATKINS STREET, TAX MAP NO. 156F-A-001, AS DETAILED ON THE ATTACHED MAP, SUBJECT TO CERTAIN CONDITIONS.

---


SECTION 1. BE IT ORDAINED BY THE CITY COUNCIL OF THE CITY OF CHATTANOOGA, TENNESSEE, That an existing sewer easement located in the 1600 block of South Watkins Street, be and is hereby closed and abandoned:

Abandonment of a sewer easement located in the 1600 block of South Watkins Street beginning at MH# S156F077 thence northwest some 115 to MH# S156F078. Tax Map Number 156F-A-001.


SECTION 2. BE IT FURTHER ORDAINED, That this Ordinance shall be approved subject to the condition that each abandoned section either be connected to the sanitary service lateral or be capped and terminated at the right-of-way line according to city code.

SECTION 3. BE IT FURTHER ORDAINED, That this Ordinance shall take effect two (2) weeks from and after its passage.

Passed on second and final reading: December 7, 2021

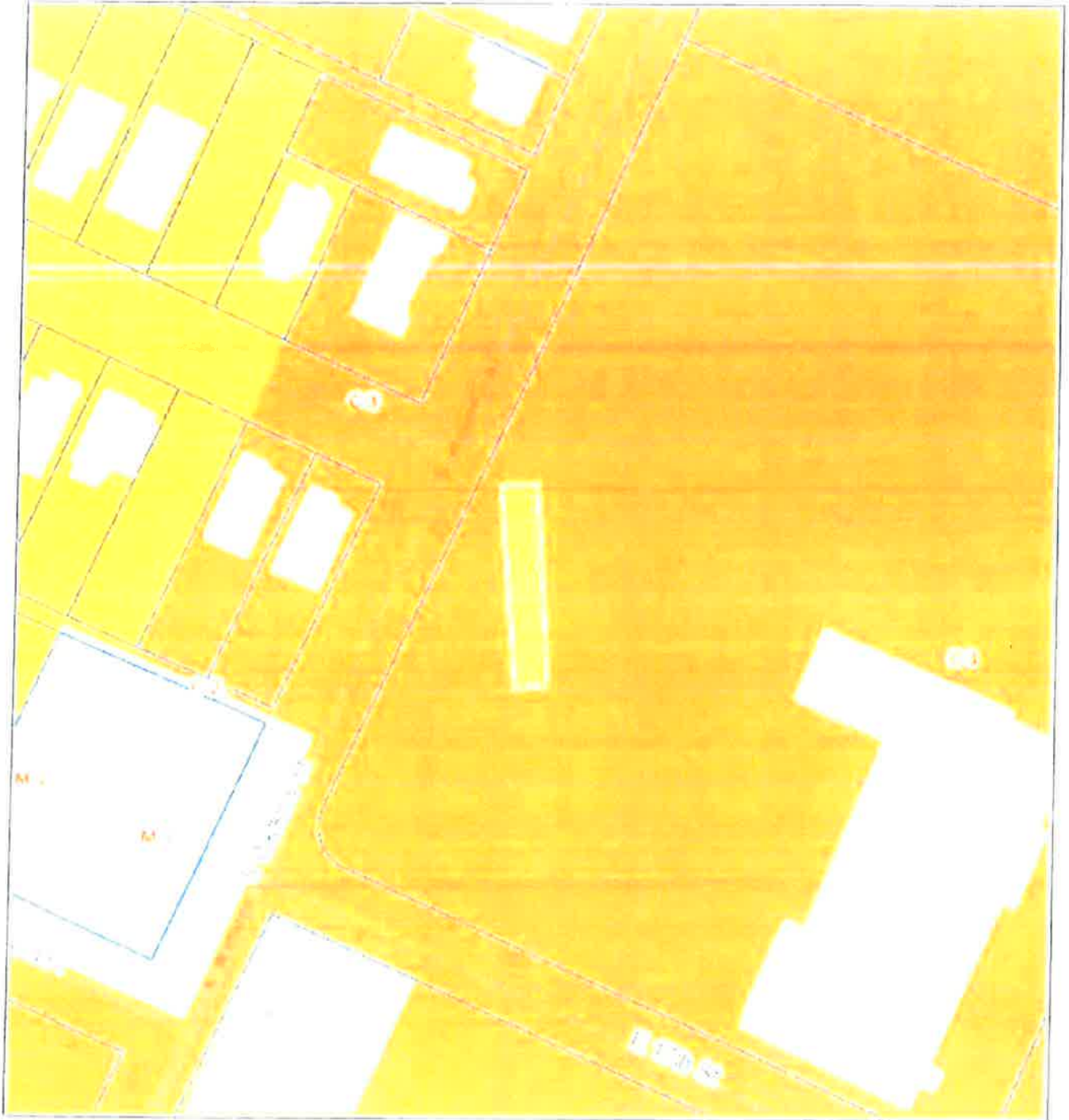
  
\_\_\_\_\_  
CHAIRPERSON

APPROVED:  DISAPPROVED:

\_\_\_\_\_  
  
\_\_\_\_\_  
MAYOR

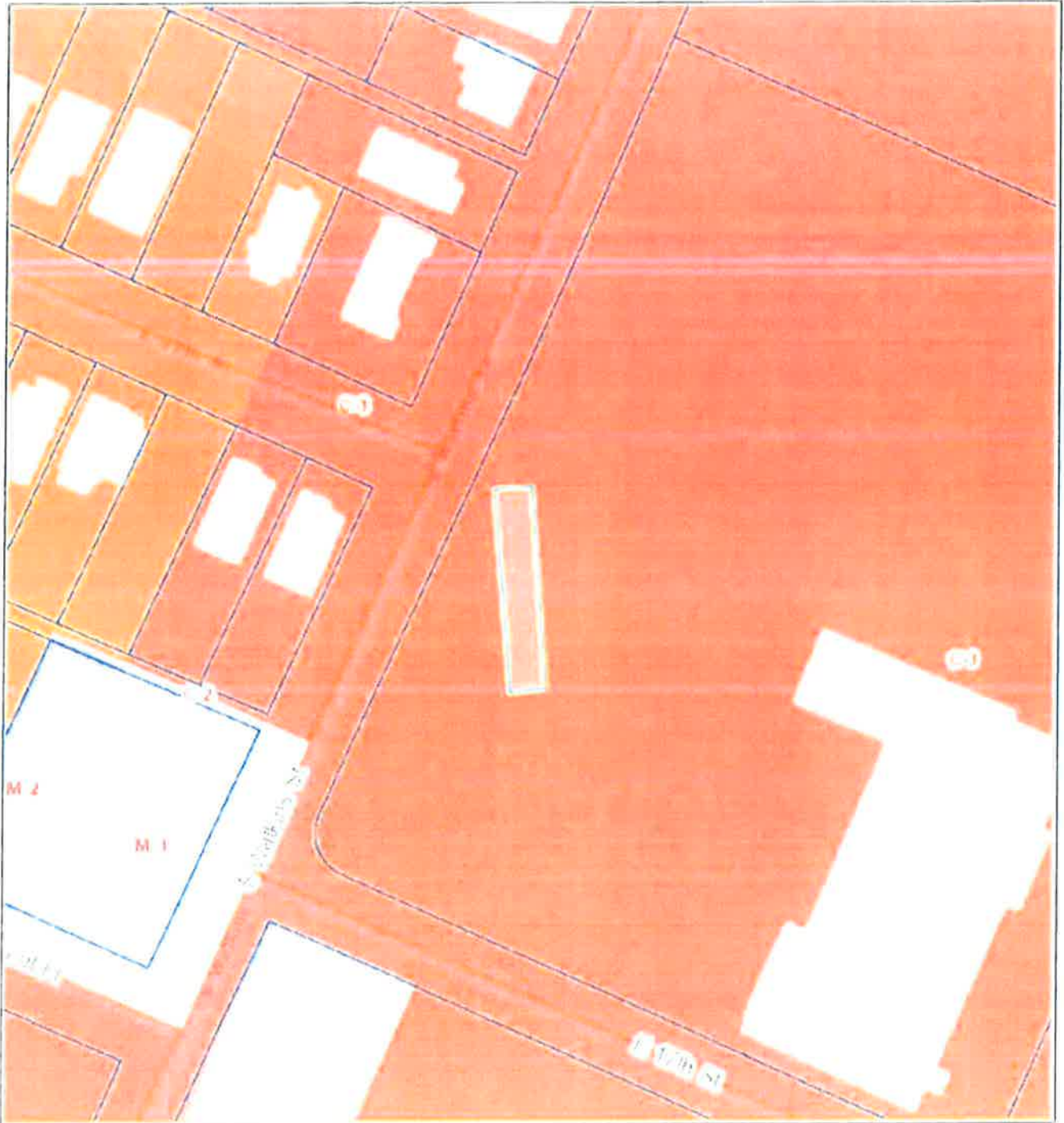
/mem

# MR 2021-0188 Sewer Easement Abandonment



PLANNING COMMISSION RECOMMENDATION  
FOR CASE NO. MR-2021-0188: Approve.

# MR 2021-0188 Sewer Easement Abandonment



# MR 2021-0188 Sewer Easement Abandonment



S. WATKINS ST.

E. 17TH ST.

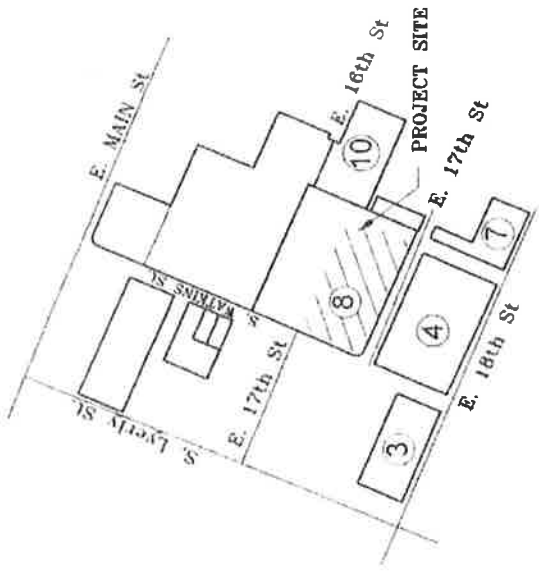
3314-0156F078

**SEWER MAIN AND EASEMENT  
ABANDONED BY MANDATORY  
REFERRAL (Approx 115 LF)**

WStRenew LLC  
1670 S. Watkins St  
DB 11857 / 677  
Lot 1, DODDS PLACE S/D  
PB 54/123, REV 121/26  
156F-A-001  
ZONING: C-5

3314-0156F077  
(New Record)

2316



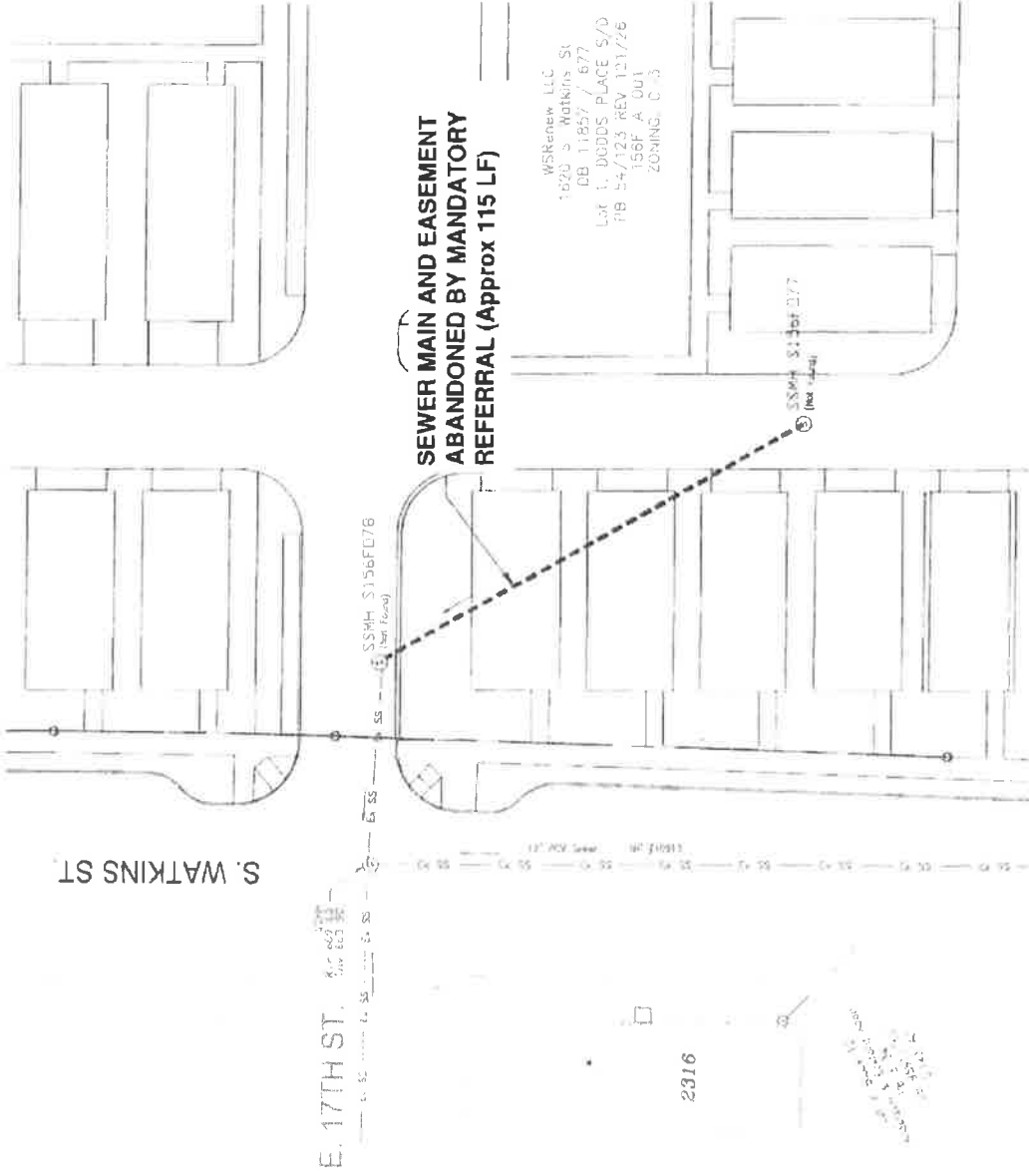
**LOCATION MAP**  
NO SCALE



GRAPHIC SCALE

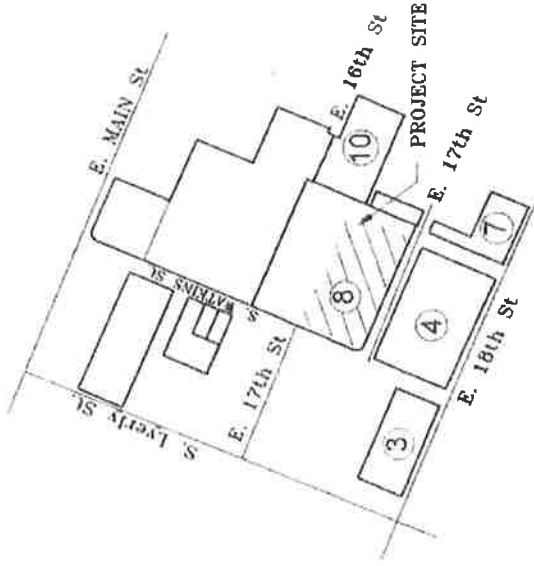


**MILL TOWN - LOT 8**  
**Sewer Mandatory Referral**  
**1620 S Watkins Street**  
**Tax Map 156F A 001**



**SEWER MAIN AND EASEMENT  
ABANDONED BY MANDATORY  
REFERRAL (Approx 115 LF)**

WSRenew LLC  
1620 S. Watkins St  
DB 11857 / 677  
Lot 1, DODD'S PLACE S/O  
PB 54/123 REV. 12/1/26  
150mm A, Out  
ZONING: C-3



**LOCATION MAP**

NO SCALE



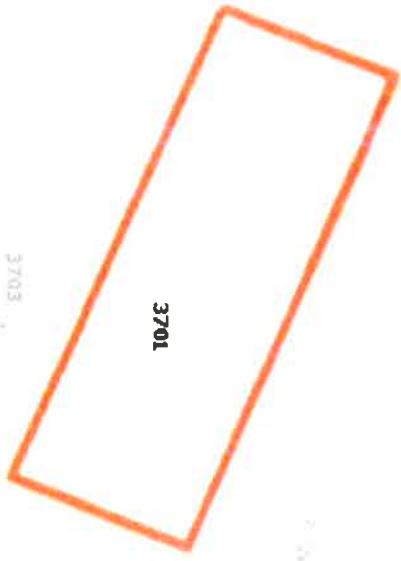
GRAPHIC SCALE



**MILL TOWN - LOT 8**  
Sewer Mandatory Referral  
1620 S Watkins Street  
Tax Map 156F A 001

# Chatanooga

2305 3631 3635 3614



## Legend

- Parcels
- Addressing <600
- Road Paved Surface
- County Boundary
- Recycling Centers
- Healthcare Facilities
- Emergency Services Locations
- FIRE
- MEDIC
- POLICE
- Cemeteries
- Religious Facilities
- Schools
- Building Footprints
- Miscellaneous Structures
- Driveways
- Parking
- Water Bodies
- Other Water Bodies
- Recreational Areas
- Surrounding
- Hamilton



50000 1000 Feet

NAD\_1983\_StatePlane\_Tennessee\_FIPS\_4100\_Feet  
© Latitude Geographics Group Ltd



3704



# Chattanooga



Legend  
Zones

1745 1783 State of Tenn, Tennessee, Plot: 1100 Feet  
Copyright: 2000-2001

